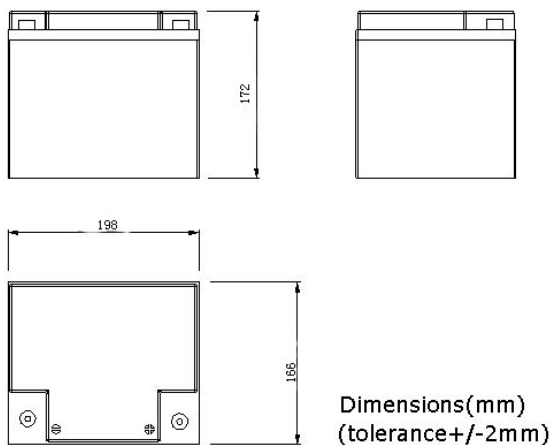




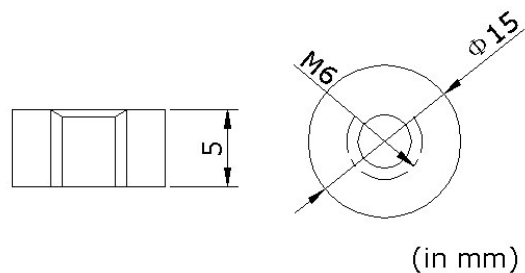
GEL45-12(12V45Ah)

## PHYSICAL SPECIFICATION

Nominal Voltage Nominal Capacity (10HR)		12V 45Ah
Dimension	Length	198±2mm (7.80 inches)
	Width	166±2mm (6.54 inches)
	Container Height	172±2mm (6.77 inches)
	Total Height	172±2mm (6.77 inches)
Weight		Approx. 14.2 Kg (31.3lbs)
Standard Terminal		Bolt-and-nuts terminal Bolt Type: M6



Bolt-and-nut terminal  
Bolt Type:M6



## ELECTRICAL SPECIFICATION

Characteristics		
Capacity	20 hour rate (2.25A)	47.2Ah
	10 hour rate (4.5A)	45Ah
Capacity affected by temperature	5 hour rate (7.65A)	38.3Ah
	3 hour rate (11.25A)	33.8Ah
	1hour rate (27A)	27Ah
Internal Resistance		Full charged battery (25°C, 77 °F) 7mΩ
Constant Voltage Charge	Cycle	Initial Charging Current less than 11.2A Voltage 14.1~14.4V at 25°C (77 °F) Temperature Coefficient -30mV/°C
	Standby	No limit on Initial Charging Current Voltage 13.5~13.8V at 25°C (77 °F) Temperature Coefficient -20mV/°C

### Discharge curves @ 25°C (77 °F)

